

## GRU STANDARD T • T STD CRANE

### CARATTERISTICHE TECNICHE

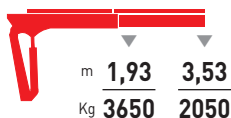
#### TECHNICAL DATA



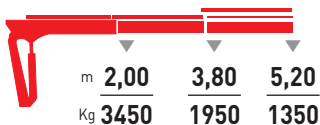
<b>Bracci stabilizzatori extra estensibili manuali</b> Manual extra extensible outrigger booms	<b>4900 mm</b>
<b>Angolo di rotazione</b> Slewing angle	<b>365°</b>
<b>Tiranti di ancoraggio (Kg 15)</b> Tie rods for anchorage	<b>n° 8</b> <b>M18x1,5</b>
<b>Portata raccomandata</b> Recommended oil flow	<b>15 l/min</b>
<b>Capacità del serbatoio</b> Tank capacity	<b>30 litri/liters</b>
<b>Pressione massima</b> Rated pressure	<b>270 bar</b>

HC 80 T	A1	A2	A3	A4	
<b>Massa della gru senza olio nel serbatoio</b> Overhang crane without oil in the tank	<b>730 Kg</b>	<b>780 Kg</b>	<b>830 Kg</b>	<b>880 Kg</b>	
<b>Momento di sollevamento massimo</b> Maximum lifting moment	<b>7,0 tm</b>	<b>6,90 tm</b>	<b>6,80 tm</b>	<b>6,6 tm</b>	
<b>Sbraccio oleodinamico</b> Maximum hydraulic reach	<b>Oriz. / Hor.</b> <b>Vert. / Vert.</b>	<b>3,53 m</b> <b>6,53 m</b>	<b>5,20 m</b> <b>8,20 m</b>	<b>6,87 m</b> <b>9,87 m</b>	<b>8,54 m</b> <b>11,54 m</b>

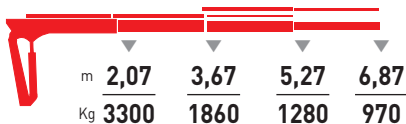
### HC 80 T A1



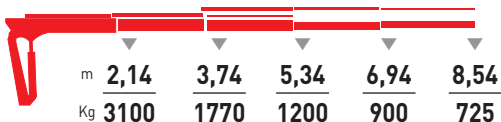
### HC 80 T A2



### HC 80 T A3



### HC 80 T A4



## GRU STANDARD T • T STD CRANE

### CARATTERISTICHE TECNICHE

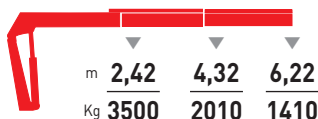
#### TECHNICAL DATA



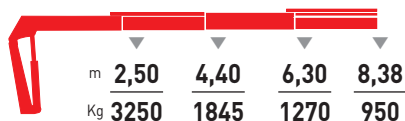
Bracci stabilizzatori extra estensibili manuali Manual extra extensible outrigger booms	5120 mm
Angolo di rotazione Slewing angle	400°
Tiranti di ancoraggio (Kg 25) Tie rods for anchorage	n° 6 M24x1,5
Portata raccomandata Recommended oil flow	30 l/min
Capacità del serbatoio Tank capacity	60 litri/liters
Pressione massima Rated pressure	230 bar

HC 90 T	A2	A3	A4	
Massa della gru senza olio nel serbatoio Overhang crane without oil in the tank	1050 Kg	1130 Kg	1190 Kg	
Momento di sollevamento massimo Maximum lifting moment	8,50 tm	8,10 tm	7,90 tm	
Sbraccio oleodinamico Maximum hydraulic reach	Oriz. / Hor. Vert. / Vert.	6,22 m 9,72 m	8,38 m 11,88 m	10,55 m 14,05 m

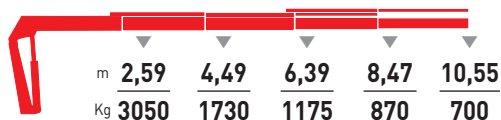
### HC 90 T A2



### HC 90 T A3



### HC 90 T A4



## GRU STANDARD T • T STD CRANE

### CARATTERISTICHE TECNICHE

#### TECHNICAL DATA



<b>Bracci stabilizzatori extra estensibili manuali</b> Manual extra extensible outrigger booms	<b>5120 mm</b>
<b>Angolo di rotazione</b> Slewing angle	<b>400°</b>
<b>Tiranti di ancoraggio (Kg 25)</b> Tie rods for anchorage	<b>n° 8</b> <b>M24x2</b>
<b>Portata raccomandata</b> Recommended oil flow	<b>30 l/min</b>
<b>Capacità del serbatoio</b> Tank capacity	<b>60 litri/liters</b>
<b>Pressione massima</b> Rated pressure	<b>270 bar</b>

### HC 120 T

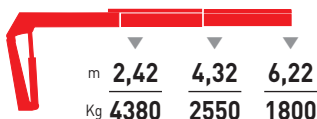
#### A2

#### A3

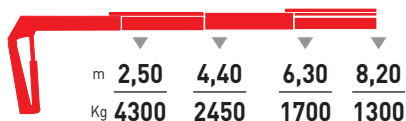
#### A4

<b>Massa della gru senza olio nel serbatoio</b> Overhang crane without oil in the tank	<b>1200 Kg</b>	<b>1280 Kg</b>	<b>1360 Kg</b>
<b>Momento di sollevamento massimo</b> Maximum lifting moment	<b>11,00 tm</b>	<b>11,00 tm</b>	<b>11,00 tm</b>
<b>Sbraccio oleodinamico</b> Maximum hydraulic reach	<b>Oriz. / Hor.</b> <b>Vert. / Vert.</b>	<b>6,22 m</b> <b>9,72 m</b>	<b>8,20 m</b> <b>11,70 m</b>
		<b>10,37 m</b> <b>13,87 m</b>	

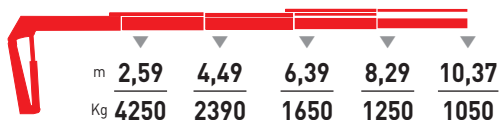
### HC 120 T A2



### HC 120 T A3



### HC 120 T A4



## GRU STANDARD T • T STD CRANE

### CARATTERISTICHE TECNICHE

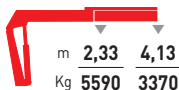
#### TECHNICAL DATA



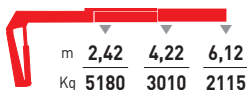
Bracci stabilizzatori extra estensibili manuali Manual extra extensible outrigger booms	5700 mm
Angolo di rotazione Slewing angle	400°
Tiranti di ancoraggio (Kg 25) Tie rods for anchorage	n° 8 M27x2
Portata raccomandata Recommended oil flow	30 l/min
Capacità del serbatoio Tank capacity	90 litri/liters
Pressione massima Rated pressure	240 bar

HC 140 T	A1	A2	A3	A4	A5	
Massa della gru senza olio nel serbatoio Overhang crane without oil in the tank	1500 Kg	1650 Kg	1770 Kg	1870 Kg	1960 Kg	
Momento di sollevamento massimo Maximum lifting moment	13,02 tm	12,53 tm	12,15 tm	11,90 tm	11,74 tm	
Sbraccio oleodinamico Maximum hydraulic reach	Oriz. / Hor. Vert. / Vert.	4,13 m 7,83 m	6,12 m 9,82 m	8,10 m 11,80 m	10,09 m 13,79 m	12,26 m 15,96 m

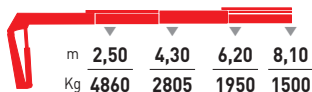
### HC 140 T A1



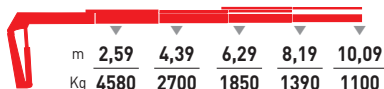
### HC 140 T A2



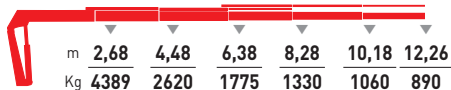
### HC 140 T A3



### HC 140 T A4



### HC 140 T A5



## GRU STANDARD T • T STD CRANE

### CARATTERISTICHE TECNICHE

#### TECHNICAL DATA



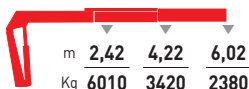
Bracci stabilizzatori extra estensibili manuali Manual extra extensible outrigger booms	5700 mm
Angolo di rotazione Slewing angle	400°
Tiranti di ancoraggio (Kg 25) Tie rods for anchorage	n° 8 M27x2
Portata raccomandata Recommended oil flow	30 l/min
Capacità del serbatoio Tank capacity	60 litri/liters
Pressione massima Rated pressure	290 bar

HC 160 T	A1	A2	A3	A4	A5	
Massa della gru senza olio nel serbatoio Overhang crane without oil in the tank	1550 Kg	1700 Kg	1820 Kg	1920 Kg	2010 Kg	
Momento di sollevamento massimo Maximum lifting moment	14,70 tm	14,54 tm	14,37 tm	14,24 tm	14,00 tm	
Sbraccio oleodinamico Maximum hydraulic reach	Oriz. / Hor. Vert. / Vert.	4,13 m 7,83 m	6,02 m 9,72 m	8,00 m 11,70 m	10,00 m 13,70 m	12,00 m 15,70 m

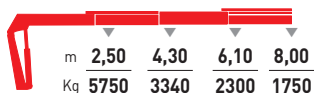
### HC 160 T A1



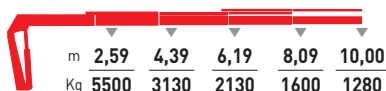
### HC 160 T A2



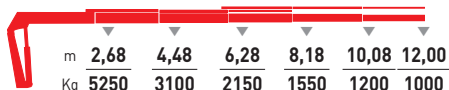
### HC 160 T A3



### HC 160 T A4



### HC 160 T A5



## GRU STANDARD T • T STD CRANE

### CARATTERISTICHE TECNICHE

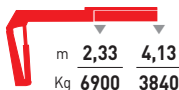
#### TECHNICAL DATA



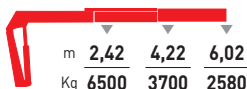
Bracci stabilizzatori extra estensibili manuali Manual extra extensible outrigger booms	5700 mm
Angolo di rotazione Slewing angle	400°
Tiranti di ancoraggio (Kg 45) Tie rods for anchorage	n° 8 M27x2
Portata raccomandata Recommended oil flow	30 l/min
Capacità del serbatoio Tank capacity	60 litri/liters
Pressione massima Rated pressure	290 bar

HC 190 T	A1	A2	A3	A4	A5	
Massa della gru senza olio nel serbatoio Overhang crane without oil in the tank	1550 Kg	1700 Kg	1820 Kg	1920 Kg	2010 Kg	
Momento di sollevamento massimo Maximum lifting moment	16,10 tm	15,75 tm	15,50 tm	15,30 tm	15,28 tm	
Sbraccio oleodinamico Maximum hydraulic reach	Oriz. / Hor.	4,13 m	6,02 m	8,00 m	10,00 m	12,00 m
	Vert. / Vert.	7,83 m	9,72 m	11,70 m	13,70 m	15,70 m

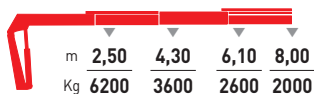
### HC 190 T A1



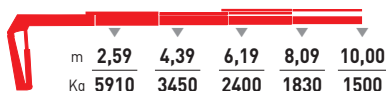
### HC 190 T A2



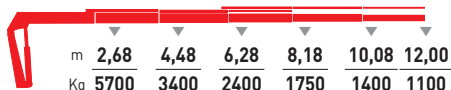
### HC 190 T A3



### HC 190 T A4



### HC 190 T A5



## GRU STANDARD T • T STD CRANE

### CARATTERISTICHE TECNICHE

#### TECHNICAL DATA



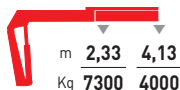
<b>Bracci stabilizzatori extra estensibili manuali</b> Manual extra extensible outrigger booms	<b>5700 mm</b>
<b>Angolo di rotazione</b> Slewing angle	<b>400°</b>
<b>Tiranti di ancoraggio (Kg 45)</b> Tie rods for anchorage	<b>n° 8 M27x2</b>
<b>Portata raccomandata</b> Recommended oil flow	<b>30 l/min</b>
<b>Capacità del serbatoio</b> Tank capacity	<b>90 litri/liters</b>
<b>Pressione massima</b> Rated pressure	<b>300 bar</b>

### HC 200 T

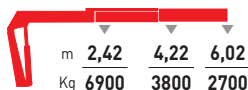
#### A1 A2 A3 A4 A5

<b>Massa della gru senza olio nel serbatoio</b> Overhang crane without oil in the tank	<b>1600 Kg</b>	<b>1750 Kg</b>	<b>1870 Kg</b>	<b>1970 Kg</b>	<b>2060 Kg</b>	
<b>Momento di sollevamento massimo</b> Maximum lifting moment	<b>17,00 tm</b>	<b>16,70 tm</b>	<b>16,50 tm</b>	<b>16,35 tm</b>	<b>16,00 tm</b>	
<b>Sbraccio oleodinamico</b> Maximum hydraulic reach	<b>Oriz. / Hor. Vert. / Vert.</b>	<b>4,13 m 7,83 m</b>	<b>6,02 m 9,72 m</b>	<b>8,00 m 11,70 m</b>	<b>10,00 m 13,70 m</b>	<b>12,00 m 15,70 m</b>

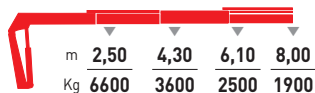
### HC 200 T A1



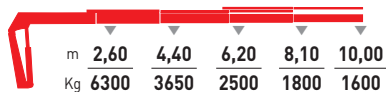
### HC 200 T A2



### HC 200 T A3



### HC 200 T A4



### HC 200 T A5

